



ENSWORTH

Best Practices for Governance & Working With the Board

Julie Russell

Ensworth School - Nashville TN





Onboarding & Board Manual (Portal) Communication





Onboarding & Board Manual (Portal)

Communication

The Meeting





Onboarding & Board Manual (Portal)

Communication

The Meeting

Confidentiality






Onboarding & Board Manual (Portal)
Communication
The Meeting
Confidentiality
Administrative Assistants “The Reality”





Onboarding & Board Manual (Portal)

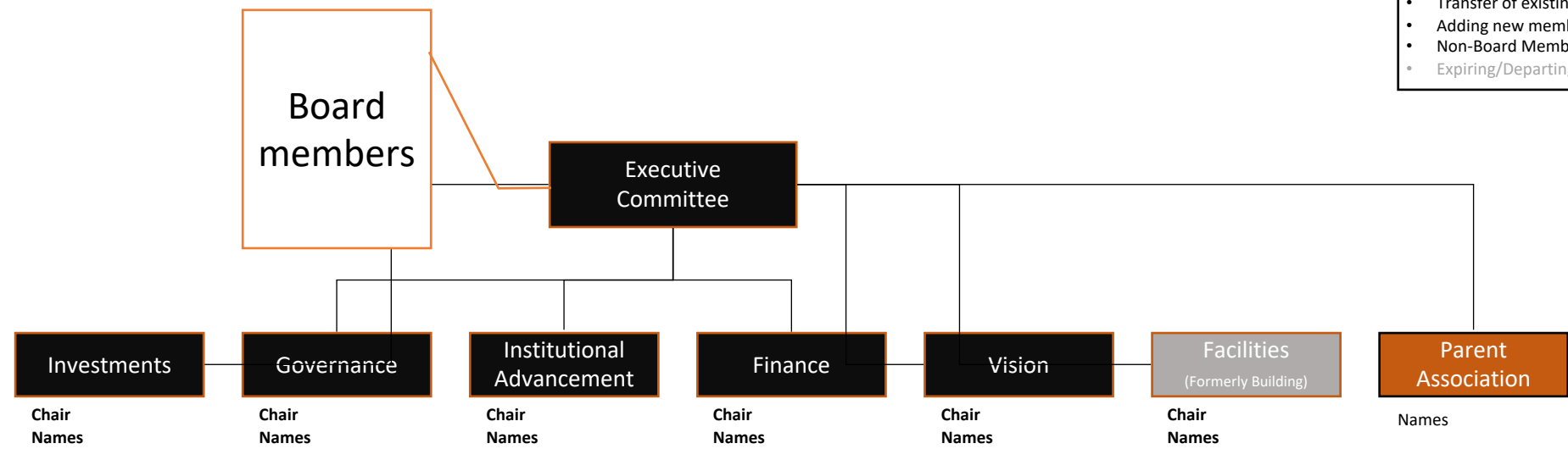
- Members List
 - Mission and Vision Statements
 - Brief History
- 



Onboarding & Board Manual (Portal)

- Organizational Chart (Structure)
- 

Ensworth: Proposed Board & Governance Structure for 2022-23



Legend:

- Transfer of existing
- Adding new member
- Non-Board Member
- Expiring/Departing

Foundational Changes:

- Notes

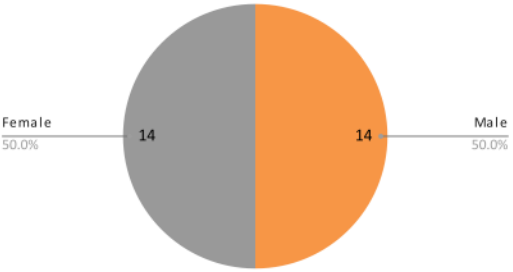
Committee Structure

2022-2023

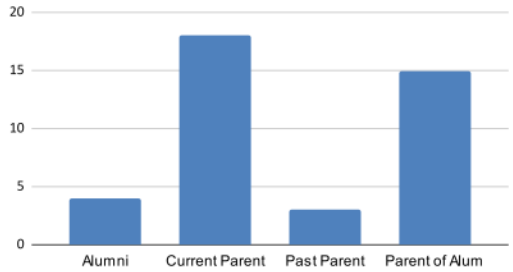
Board Member	Executive	Vision	Finance + Infrastructure	Investment	Advancement	Governance	Facilities
Will Morrow	Chair	X	X	X	X	X	X
Brock Kidd	VC	X	X	X	X	X	X
Jim Bowen	Secretary	X	X			X	
Bruce Crosby	Treasurer		Chair	X			
John Jacobson	Counsel						
Bruce Moore	Spec Adv					X	
Kathryn Brown	X		X	X			Chair
Gerard Bullock						X	
Daphne Butler						X	
Raja Clark		X	X	X			
Beth Courtney					X		
Amenda Farnsworth	X			Chair			
Jennifer Frist		X	X				
Frank Gordon				X			
Chad Greer	X		X			Chair	
Emily Kurtz		X			X	X	
Deb McDermott					X		
Don Orr							X
Neal Patel	X	Chair					
Yvonne Ralsky	X	X			Chair		
Rebecca Shah					X		
Louis Upkins						X	
Stephaine Walker					X		
Prentice Stabler (Head of School)	X	X	X	X	X	X	
Amenda Graff (President, Parent Assoc)					X		
Katie Porterfield (President-Elect, Parent Assoc)					X		
Christopher Coda (President, Alumni Council)					X		
Lauren Elcan (Chair, National Advisory Council)		X			X		
Kailey Hand (non-Board)					X		
TOTALS FOR COMMITTEE:	12	10	9	8	14	10	4

Total Board Members	28	
Officers	6	21%
Term Members	17	61%
Ex-Officio	5	18%
Permanent	0	0%
Alumni	4	14%
Current Parent	18	64%
Past Parent	3	11%
Parent of Alum	15	54%
Male	14	50%
Female	14	50%

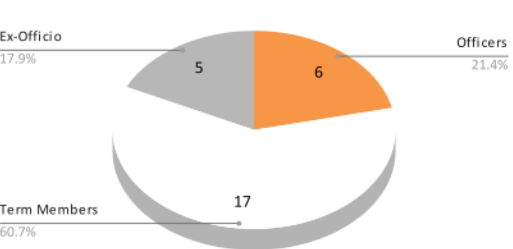
Gender



Member Constituency




Membership Type






Onboarding & Board Manual (Portal)

- Bylaws and Policies
 - Faculty/Staff Handbook
- 



Communication

- Board and Committee Meeting Calendar
 - Meeting Agenda/Minutes and Timely Distribution
- 

Agenda
Ensworth Board of Trustees
April 6, 2023, 12:00pm-4:00pm
Athletic Conference Room, Frist Campus

Welcome

Morrow

12:00

For the Good of Ensworth

Stabler

12:02

Approval of Minutes

Bowen

12:17

Board President's Report

- Introduction of New Board Members

Morrow

12:20

Head of School's Report

Stabler

12:35

Finance Committee Report/Update

Crosby

12:55

Committee Reports/Discussion

- Governance Committee Report
- Investment Committee Report
- Institutional Advancement Committee Report
- Vision Committee Report
- Facilities Committee Report
- Parents Association Report
- Ensworth Alumni Board Report
- National Advisory Council Report

Morrow

1:10

Security Update and Review

Stabler/Pollard

2:00

Strategic Planning

Stabler

3:00

Executive Session

Morrow

3:50

Adjourn

Morrow

4:00

Next Meetings:

Attachments

Head of School's Report

Board Meeting Minutes 2-9-23

INV – Meeting Minutes 3-21-23



Upon a motion duly made by John Smith and seconded by Mary Smith, the 2022-23 Budget was approved as presented.






Communication

- Board Portal
 - Relationship with Board Member's Professional Administrative Assistants
- 



The Meeting

- Communicate time and place
 - Hospitality
 - Room setup
- 


THE ART OF GATHERING

HOW WE
MEET AND
WHY IT
MATTERS

PRIYA PARKER



Confidentiality

- Set Expectations Early
 - Access to Information
 - Influence
- 




Confidentiality

- Board Member's Assistants
- Conflict of Interest Disclosure



Administrative Assistants “The Reality”

- Who comes first? The HOS or the Chair?
 - Who can request work/support?
 - Hourly vs. Salary
- 



Administrative Assistants “The Reality”

- Board Members Donate Their Time
- Grace and Backbone